

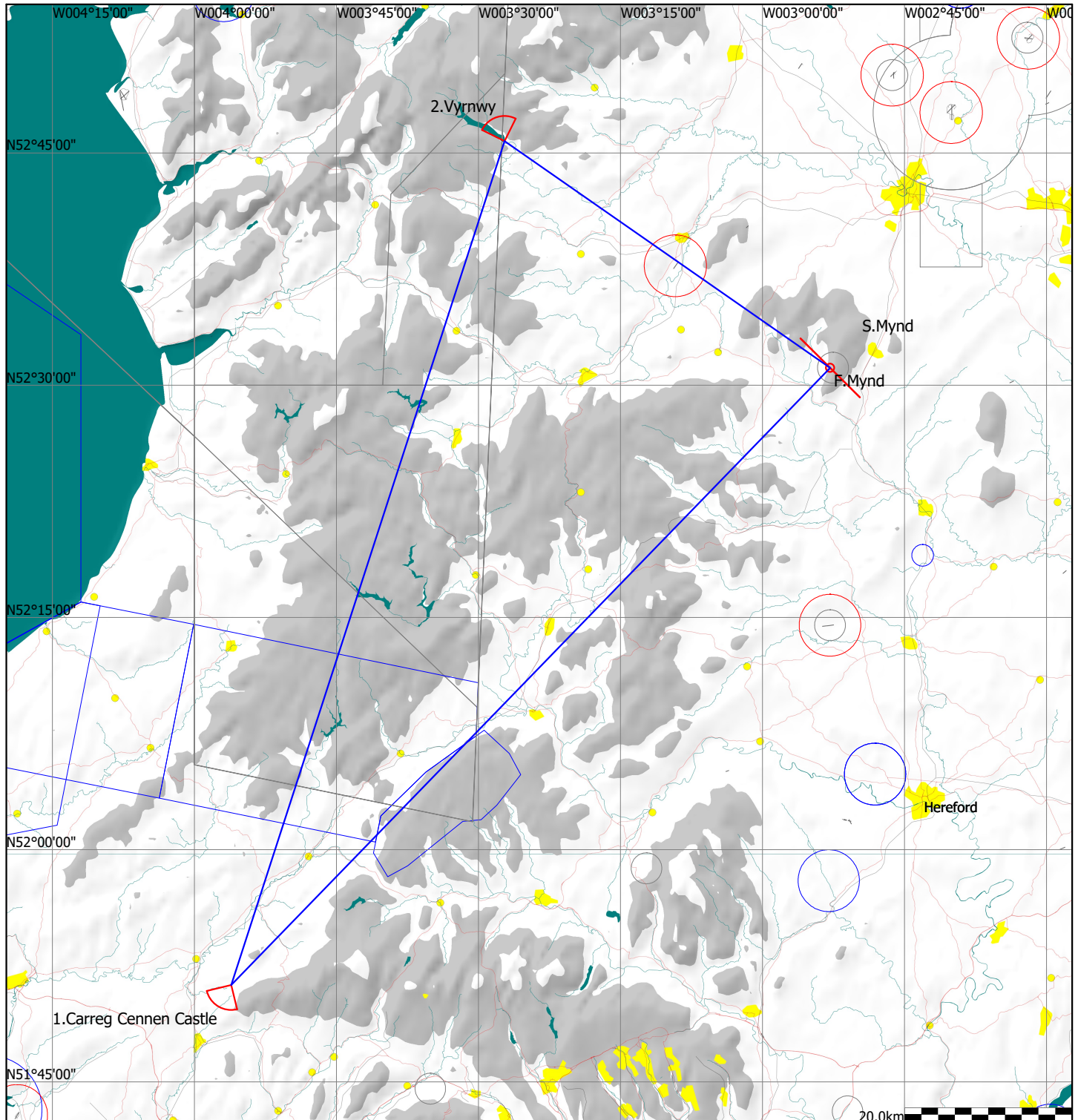
Task Information

Midland Gliding Club

Type: Polygon with two points

Task distance: 256.9km

Style	Code	Points	Latitude	Longitude	Dis.	Crs.
Take off	MYN	Mynd	N52°31'07"	W002°52'51"		
Start	MYN	Mynd	N52°31'07"	W002°52'51"		
1.Point	CCC	Carreg Cennen Castle	N51°51'16"	W003°56'07"	103.3km	225°
2.Point	VRY	Vyrnwy	N52°45'46"	W003°27'15"	106.3km	18°
Finish	MYN	Mynd	N52°31'07"	W002°52'51"	47.4km	125°
Landing	MYN	Mynd	N52°31'07"	W002°52'51"		



Start: line, 5k radius perpendicular to outbound track
Finish: 0.5k barrel
Waypoints: symmetrical, 45deg angle, 3k radius