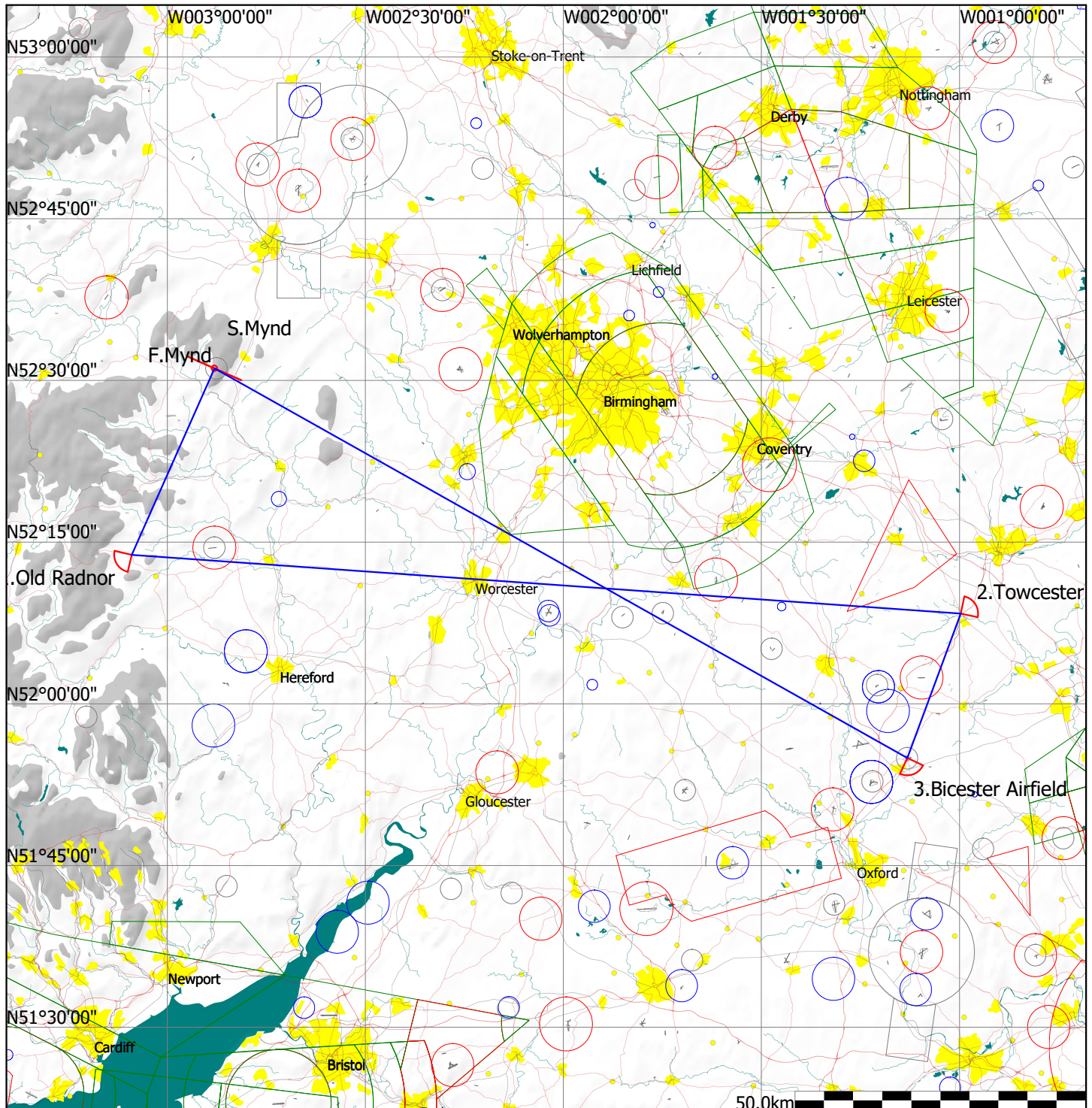


Task Information

Type: Polygon with three points

Task distance: 342.1km

Style	Code	Points	Latitude	Longitude	Dis.	Crs.
Take off	MYN	Mynd	N52°31'07"	W002°52'51"		
Start	MYN	Mynd	N52°31'07"	W002°52'51"		
1.Point	ORA	Old Radnor	N52°13'49"	W003°05'22"	35.1km	204°
2.Point	TOW	Towcester	N52°08'23"	W000°59'49"	143.5km	93°
3.Point	BC1	Bicester Airfield	N51°54'59"	W001°07'53"	26.5km	200°
Finish	MYN	Mynd	N52°31'07"	W002°52'51"	137.1km	300°
Landing	MYN	Mynd	N52°31'07"	W002°52'51"		



Start: line, 5k radius perpendicular to outbound track

Finish: 0.5k barrel

Waypoints: symmetrical, 45deg angle, 3k radius