

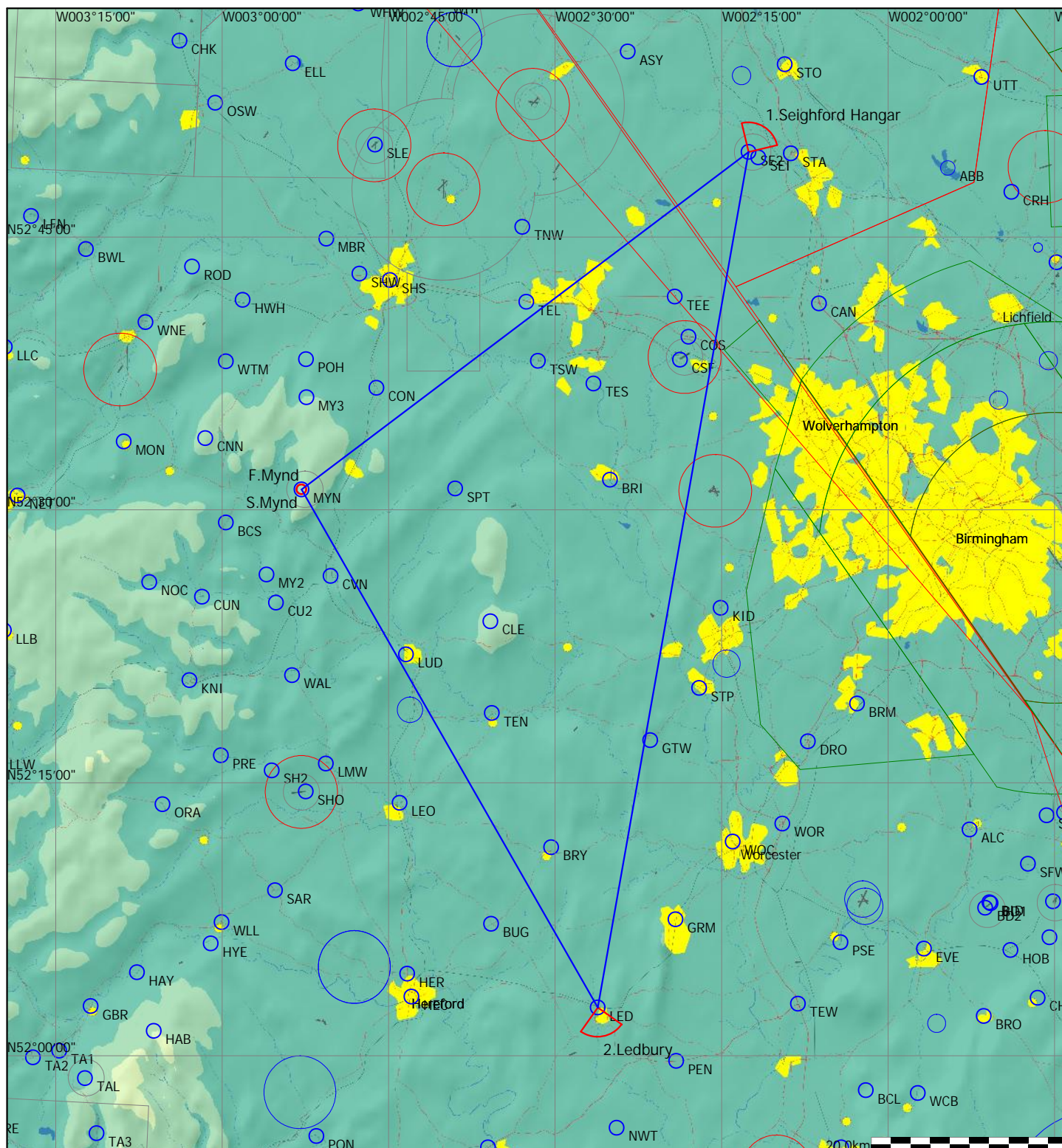
Task Information

Midland Gliding Club

Type: Triangle - (206.4km) [206.4pts]

Task distance: 206.4km

Style	Code	Points	Latitude	Longitude	Dis.	Crs.
Start	MYN	Mynd	N52°31'07"	W002°52'51"		
1.Point	SE2	Seighford Hangar	N52°49'40"	W002°12'33"	57.0km	53°
2.Point	LED	Ledbury	N52°02'39"	W002°26'09"	88.5km	190°
Finish	MYN	Mynd	N52°31'07"	W002°52'51"	60.9km	330°



Start: line, 5k radius perpendicular to outbound track

Finish: 0.5k barrel

Waypoints: symmetrical, 45deg angle, 3k radius

Club Task - always scores as pre-declared