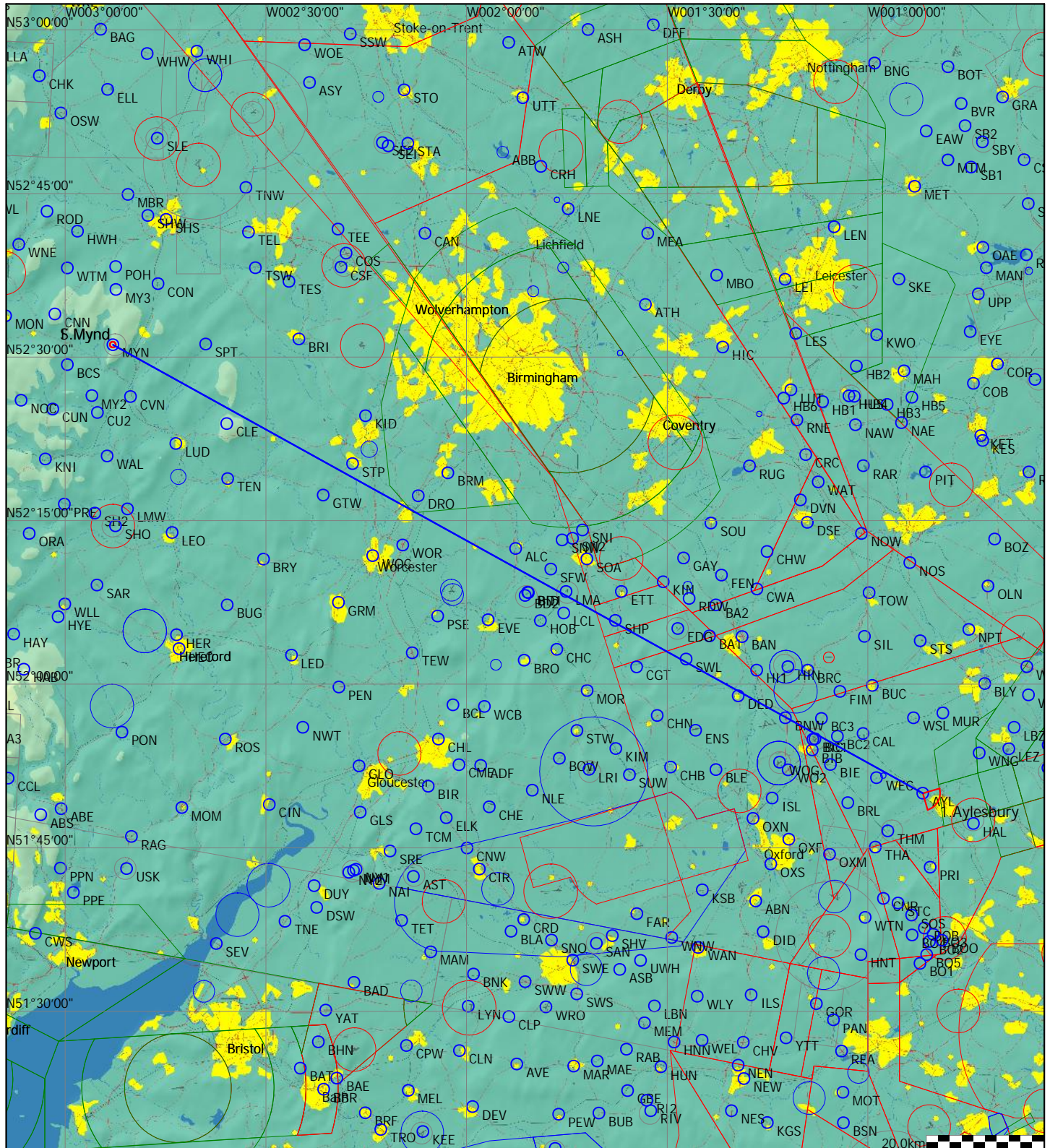


Task Information

Type: Broken Leg [315.4pts]

Task distance: 315.4km

Style	Code	Points	Latitude	Longitude	Dis.	Crs.
Start	MYN	Mynd	N52°31'07"	W002°52'51"		
1.Point	AYL	Aylesbury	N51°49'59"	W000°51'46"	157.7km	118°
Finish	MYN	Mynd	N52°31'07"	W002°52'51"	157.7km	300°



- Start: line, 5k radius perpendicular to outbound track
- Finish: 0.5k barrel
- Waypoints: symmetrical, 45deg angle, 3k radius
- Club Task - always scores as pre-declared